

Installing Printer Driver for MCP 2 Plotters

This document gives instruction on how to install the driver for your MCP 2 plotter using the “psetup” install package.

MCP BASIC 2 / MCP PLUS 2

Partnumbers – 2438520000 / 2438510000

Install printer driver

The printer driver supports Windows 7, Windows 8, Windows 8.1 and Windows 10.

Install the printer driver „MCP BASIC 2“ / „MCP PLUS 2“ (available at www.weidmueller.com or on the delivered DVD). After installation there is no need to change any setting in the printer driver!

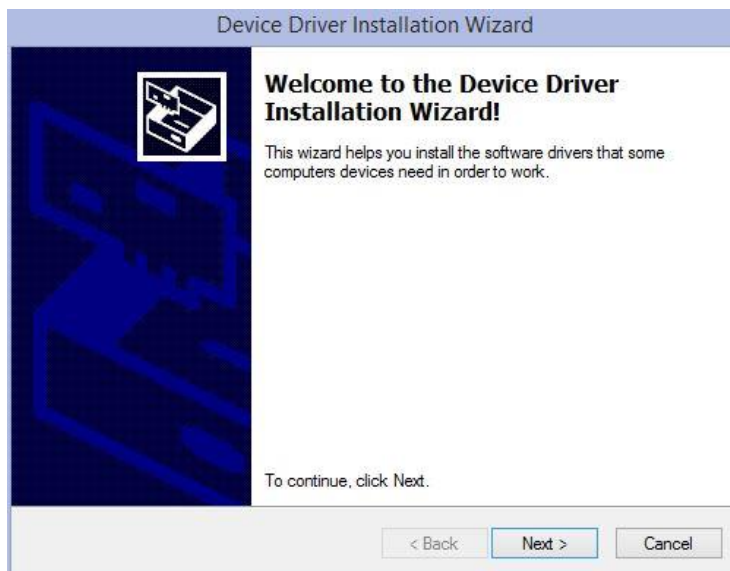
Notice: Administrator rights are necessary to install the driver.

The packet consists of:

- a folder „Psetup_...“.
- here in an application „psetup.exe“
- further operating system specific folders and subfolders

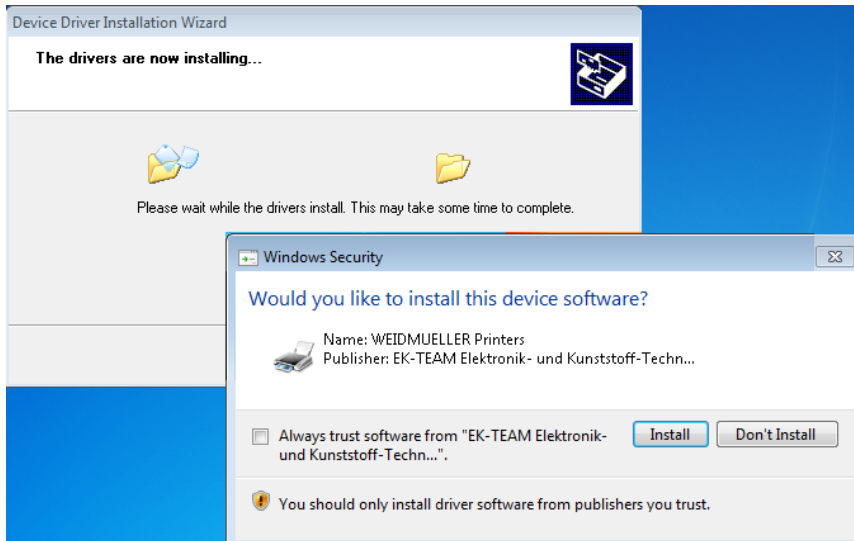
If the driver package has been downloaded, please save and extract the zip-file “Psetup” on your computer.

1. Connect the plotter to the computer and switch it on (recommended).
2. Open the Folder **“Psetup”** and start the program **“psetup.exe”**
A window named **“Device Driver Installation Wizard”** will appear.
Click on **“Next”** to begin the driver installation.



Installing Printer Driver for MCP 2 Plotters

When the message "Windows Security" appears, click on "Install"



3. Click on the "Finish" button to complete the driver pre-installing process.

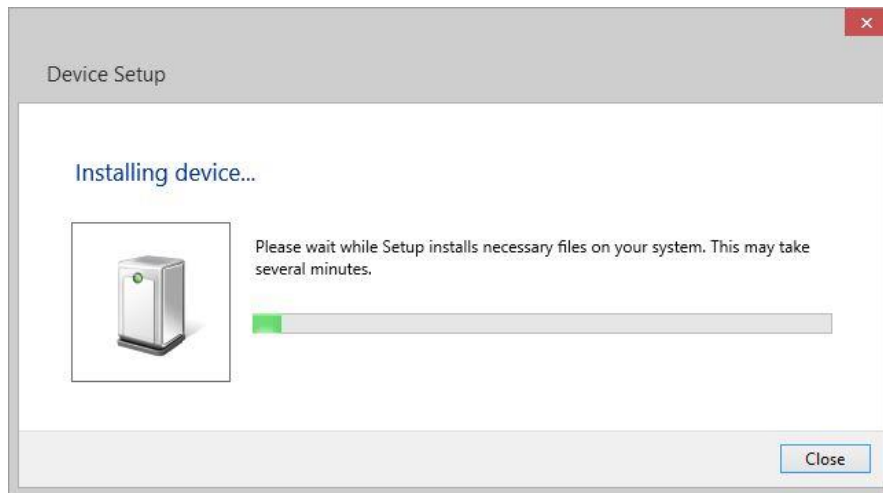


4. When the plotter is switched on the first time, Windows completes the driver installation automatically. After completion, you will be notified by a taskbar bubble.

During this procedure you will see a symbol on the taskbar (only Windows 8, Windows 8.1 and Windows 10). If you click on the symbol, you can see the progress of the installation. The symbol and message window will disappear after the installation is completed.



Installing Printer Driver for MCP 2 Plotters

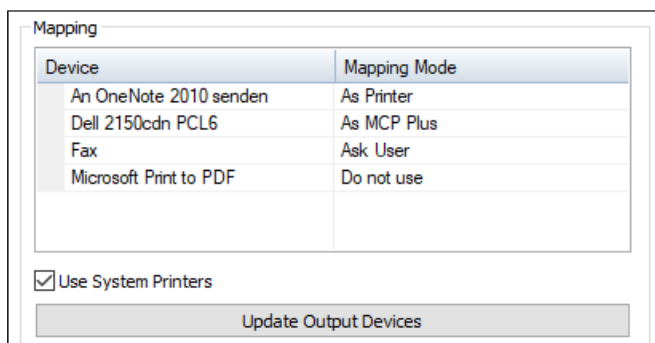


If you want to check the success of the installation, please go to **"Devices and Printers"** under the control panel. There you will see your MCP in the list of printers.

Settings in M-Print® PRO

After installing the driver, please make sure to activate following setting in the M-Print PRO options under the menu item "Tools → Options → Output Devices":

Use Windows Printers



Using this option, all the system printers of the operating system are displayed in the list and offered for selection in the print dialog. Otherwise, only the internally usable printers are available in the list.

Printers that are available in the network, but should not be used by M-Print® PRO, can be hidden for consideration in the print dialog and the status monitor.